

# Algorithmic Business Research ABIZ

Horizon 2020 ICT - Information and  
Networking Event  
Neuchâtel, 07.02.2020

Flash Presentation



# Who we are

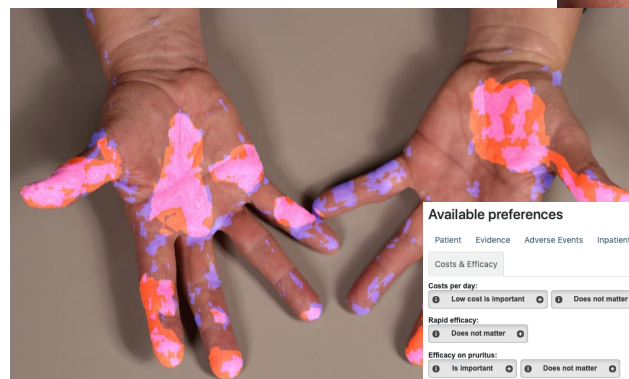
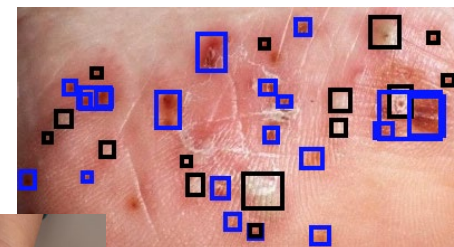
Lucerne University of  
Applied Sciences and Arts

**HOCHSCHULE  
LUZERN**

- industrial Machine Learning solutions with designated business models for
  - e-commerce
  - medtech
  - biotech

# Experience (what we do)

- dermatologic image analysis [SkinApp]
- therapy advisory systems
- predictive maintenance of medical devices
- cell analysis



**Available preferences**

Patient Evidence Adverse Events Inpatient treatment Application

Costs & Efficacy

Costs per day:  
 Low cost is important  Does not matter

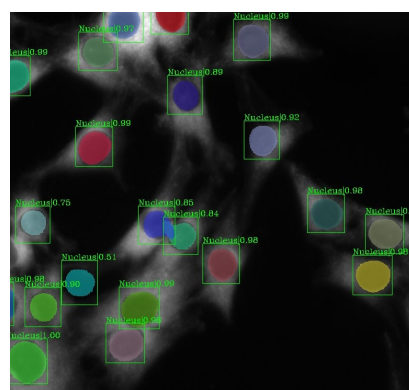
Rapid efficacy:  
 Does not matter

Efficacy on pruritus:  
 Is important  Does not matter

Short half-life:  
 Is important  Does not matter







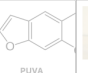





**Active preferences**

- Affected body parts: Outer skin including trunk, arms and legs
- Rapid efficacy: Is important



**Results** [Click for details, draw line for comparisons of two options](#)

These items are optimal according to your preferences:

|  |  |  |  |
|--|--|--|--|
| <br><b>Clobetasol propionate</b> | <br><b>Clobetasol propionate</b> | <br><b>Infliximab</b>                  | <br><b>Secukinumab</b>                 |
| <br><b>Ibuprofen</b>            | <br><b>Inpatient</b>            | <br><b>PUVA</b>                       | <br><b>Ustekinumab</b>                |
| <br><b>Adalimumab</b>           | <br><b>Cyclosporin</b>          | <br><b>Calcipotriol Betamethasone</b> | <br><b>Calcipotriol Betamethasone</b> |

**Details**

**Infliximab**  
Remicade  
Systemic / IV

**Patient - Affected body parts**  
Intertriginous regions or face: 1  
Outer skin including trunk, arms and legs: Scalp: 1  
Acral regions including hands and feet:

**Patient - Severity**  
Mild psoriasis: 0.2  
Moderate to severe psoriasis: 1

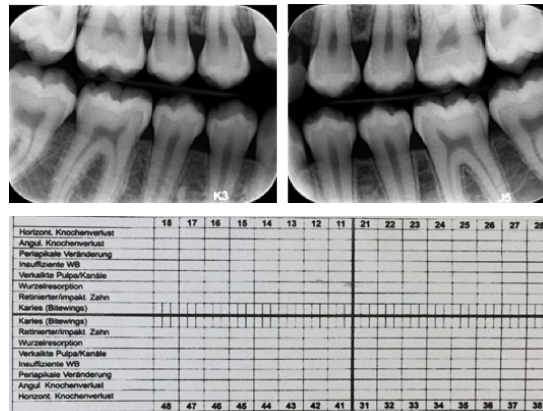
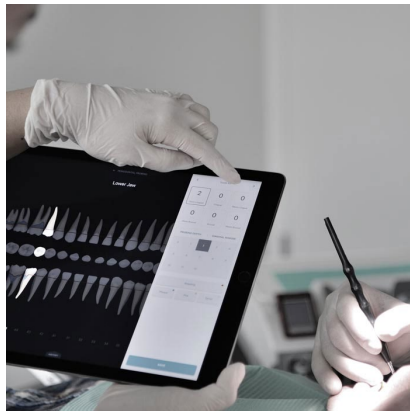
**Patient - Circumstances**  
Child: 0  
Pregnancy: 0.2

**Evidence**  
Efficacy-levelled: 4  
Longterm Experience: 0.8  
Evidence for Efficacy: 1

**Adverse Events**  
Skin Flare: 0.1

# Project Ideas (what we're looking for)

- GEDAI: Getting Europe Dental AI
  - integrated system for dentistry



- support in development of industrializable, state-of-the-art Machine Learning models

# Contact details

- Contact person: Simone Lionetti
- Phone: +41 41 757 68 11
- Email: [simone.lionetti@hslu.ch](mailto:simone.lionetti@hslu.ch)
- Website: [abiz.ch](http://abiz.ch)